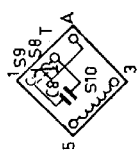
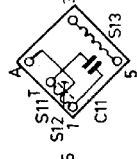


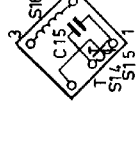
A



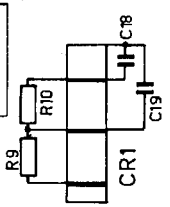
B



C



D



Cabinet (-OOD) Cabinet (-OOL) Cabinet (-OOR) Ornamental plate Rear cover	Kast (-OOD) Kast (-OOL) Kast (-OOR) Sierplaat Achterwand	Gehäuse (-OOD) Gehäuse (-OOL) Gehäuse (-OOR) Zierplatte Rückwand	Coffret (-OOD) Coffret (-OOL) Coffret (-OOR) Plaque decorative Couvercle	Caja (-OOD) Caja (-OOL) Caja (-OOR) Placa decorativa Cubierta
Window before dial Screw	Venster voor schaal Schroef	Fenster für Skala Schraube	Fenêtre pour cadran Vis	Ventana para cuadrante Tornillo
Cap over 1 battery Cap over 2 batteries	Kap over 1 batterij Kap over 2 batterijen	Kappe über 1 Batt. Kappe über 2 Batt.	Capot pour 1 pile Capot pour 2 piles	Cubierta para 1 pila Cubierta para 2 pila
Knob	Knop	Knopf	Bouton	Botón
Socket plate	Stekkerplaat	Steckerbuchse	Douille	Placa de hembra
Battery holder; Contact spring (1x) Contact spring (1x) Contact spring (2x)	Batterijhouder; Contacteer (1x) Contacteer (1x) Contacteer (2x)	Batteriehälter; Kontaktfeder (1x) Kontaktfeder (1x) Kontaktfeder (2x)	Porte-pile; Ressort (1x) Ressort (1x) Ressort (2x)	Porta-pila; Ressorte (1x) Ressorte (1x) Ressorte (2x)
Switch; Spring Strip Bracket	Schakelaar; Veer Strip Baugel	Schalter; Feder Streife Bügel	Commutateur; Ressort Bacette fixe Equerre	Comutador; Resorte Placa fija Abradora
Dial	Schaal	Skala	Cadran	Cuadrante
S1 } S2 } S5 } S6 } S7 }	A3 986 48 A3 129 60 A3 129 61	S20 } S21 } S22 } C1 } C1a } C2 } C2a } C9 } C17 }	C20 } C22 } C23 } B9 } R10 } C18 } C19 } R11 }	R13 } C21 } 2P 725 22
S8 } S9 } S10 } S11 } S12 } S13 } S14 } S15 } S16 } S17 } S18 } S19 }	A3 129 60 A3 162 18	C426 AE/G3,2 C426 AM/G20 C426 AM/G20 B9 } R10 } C18 } C19 } R11 }	R13 } C21 } 2P 725 24 B1 514 87	JG/PvdE